



DIECI



26.6



25.6 R

APOLLO

PERFORMANCE

Machine model	APOLLO 25.6 R	APOLLO 26.6
Maximum capacity	2500 kg (5512 lb)	2600 kg (5732 lb)
Maximum lifting height on wheels	5,78 m (19 ft)	5,78 m (19 ft)
Maximum horizontal extension on wheels	3,25 m (10,7 ft)	3,2 m (10,5 ft)
Fork swiveling angle	129°	129°
Pull-out force	7600 daN (17085 lbf)	7600 daN (17085 lbf)
Towing force	3400 daN (7644 lbf)	4400 daN (9892 lbf)
Maximum climb angle	40%	40%
Unladen weight	4800 kg (10582 lb)	5000 kg (11023 lb)
Max speed (referred to wheels with maximum permitted diameter)	23 km/h (14,3 mph)	30 km/h (18,6 mph)

BOOM

Machine model	APOLLO 25.6 R	APOLLO 26.6
Lifting	8,8 s	7,8 s
Getting off the basket	4,1 s	4,1 s
Extension	6,1 s	6,1 s
Retraction	3,4 s	3,4 s
Forward swiveling	3,5 s	3,5 s
Reverse swiveling	2,2 s	2,2 s

ENGINE

Machine model	APOLLO 25.6 R	APOLLO 26.6
Brand	Kubota	Kubota
Nominal power	36,5 kW (49 HP)	54,6 kW (73 HP)
@rpm	2700 rpm	2600 rpm
Operation	4-stroke	4-stroke
Injection	Mechanical	Electronic, Common rail
Number and arrangement of cylinders	4, Vertical in line	4, Vertical in line
Displacement	2615 cm ³ (160 in ³)	3331 cm ³ (203 in ³)
Consumption	235 g/kWh (386,58 lb/Hp h)	231 g/kWh (380 lb/Hp h)
@rpm	2700 rpm	2600 rpm
Emission standards	Stage IIIA/Tier 3	Stage IIIB/Tier 4i
Exhaust gas treatment	-	Particulate filter (DPF)
Cooling system	Liquid	Liquid
Intake	Natural	Turbocharger

DIFFERENTIAL AXLES

Machine model	APOLLO 25.6 R	APOLLO 26.6
Axles type	2 steering, with 4 epicycloidal reduction gears	2 steering, with 4 epicycloidal reduction gears
Type of steering	4 wheels / transversal / 2 wheels	4 wheels / transversal / 2 wheels
Front axle	Rigid	Rigid
Rear axle	Swinging	Swinging
Service braking	Oil bath on front axle	Oil bath on front axle
Parking braking	Negative actuation with electrical control	Negative actuation with electrical control

HYDRAULIC SYSTEM

Machine model	APOLLO 25.6 R	APOLLO 26.6
Hydraulic pump type	Gear pump for power steering and movements	Gear pump for power steering and movements
Hydraulic pump capacity	70 L/min (18,5 gal/min)	80 L/min (21,1 gal/min)
Max. operating pressure	23,0 MPa (3336 psi)	23,0 MPa (3336 psi)
Distributor control	Proportional 4in1 Joystick	Proportional 4in1 Joystick

REFUELING

Machine model	APOLLO 25.6 R	APOLLO 26.6
Hydraulic system (total)	70,0 L (18,49 gal)	70,0 L (18,49 gal)
Diesel tank	80,0 L (21,13 gal)	80,0 L (21,13 gal)

TRANSMISSION

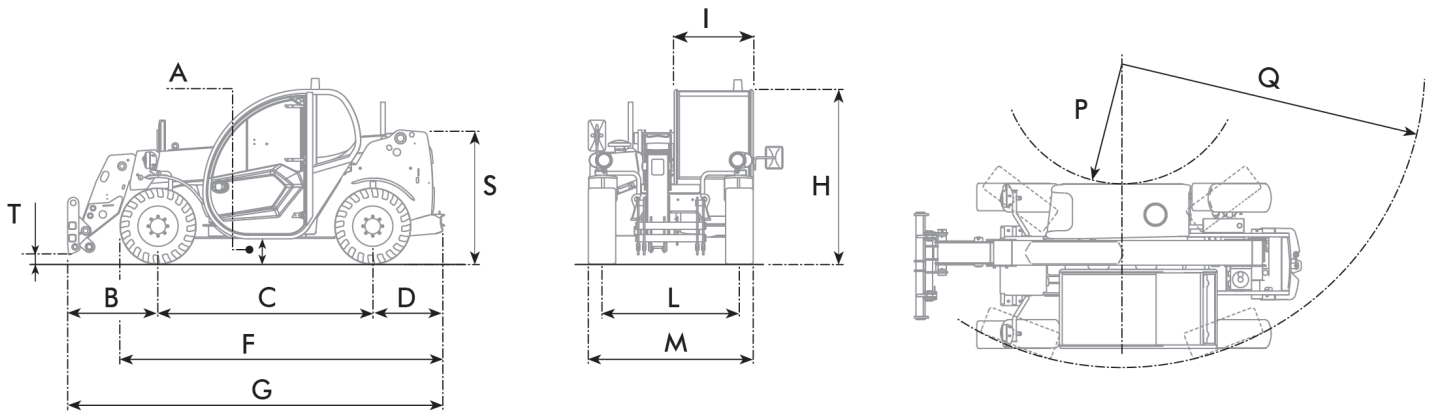
Machine model	APOLLO 25.6 R	APOLLO 26.6
Transmission type	Single speed Hydrostatic transmission with variable displacement pump	Single speed Hydrostatic transmission with variable displacement pump
Hydraulic motor	Hydrostatic with continuous automatic adjustment	Hydrostatic with continuous automatic adjustment
Reversal	Electro-Hydraulic	Electro-Hydraulic
Inching	With hydraulic pedal for controlled forward movement	With hydraulic pedal for controlled forward movement

TIRES

Machine model	APOLLO 25.6 R	APOLLO 26.6
Standard tires	12x16.5"	12x16.5"
Optional tires	12x18"	12x18"

DIMENSIONS

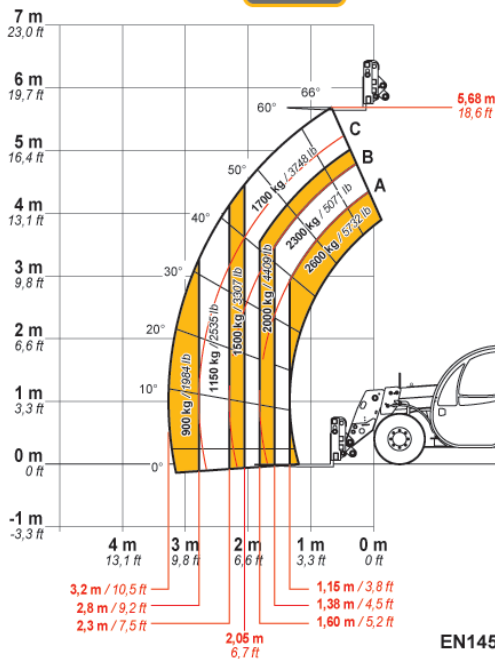
Machine model	APOLLO 25.6 R	APOLLO 26.6
A	270 mm (10,6 in)	270 mm (10,6 in)
B	985 mm (38,8 in)	985 mm (38,8 in)
C	2350 mm (92,5 in)	2350 mm (92,5 in)
D	765 mm (30,1 in)	765 mm (30,1 in)
F	3535 mm (139,2 in)	3535 mm (139,2 in)
G	4125 mm (162,4 in)	4125 mm (162,4 in)
H	1950 mm (76,8 in)	1950 mm (76,8 in)
I	1850 mm (72,8 in)	1850 mm (72,8 in)
L	1500 mm (59,1 in)	1500 mm (59,1 in)
M	1850 mm (72,8 in)	1850 mm (72,8 in)
P	1460 mm (57,5 in)	1460 mm (57,5 in)
Q	3555 mm (140 in)	3555 mm (140 in)
S	1433 mm (56,4 in)	1433 mm (56,4 in)
T	200 mm (7,9 in)	200 mm (7,9 in)



MAX
2600 kg / 5732 lb



DOC10000822

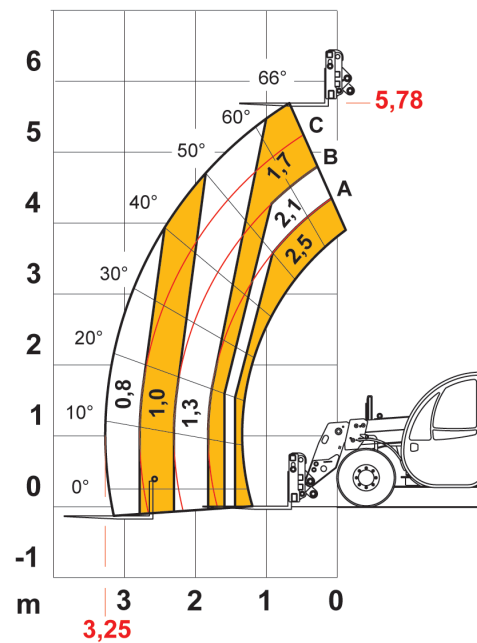


26.6

MAX 2,5 t



AXB1377



25.6

