



## HTL 3207



### PRODUCTIVITY & PRECISION

- > Hydrostatic transmission & inching pedal
- > Outstanding outreach capacity
- > Simultaneous & proportional control for movement (flowsharing option)
- > Semi-automatic wheels alignment

### COMPACT & COMFORT

- > Lowest height of the HTL Range
- > Short turning radius
- > Driving position, reducing fatigue at work
- > Ergonomic and intuitive cab

### EASY TO USE AND MAINTAIN

- > Easy access to all components
- > Smart control 4 in 1 joystick
- > Quick LMS (Load Management System) calibration



PLACING  
HEIGHT  
7 M



MAXIMUM LIFT  
CAPACITY  
3200 KG

# HTL 3207

## TELEHANDLERS

### PERFORMANCES

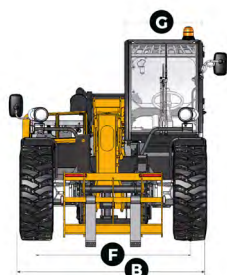
Maximum lift capacity	3200 kg
Lift capacity to full height	2500 kg
Lift capacity at full reach	1300 kg
Maximum fork height	6.85 m
Reach at maximum fork height	0.85 m
Maximum forward reach	3.8 m

### DIMENSIONS

<b>A</b> Length	4.67 m
<b>B</b> Width	2.26 m
<b>C</b> Height	2.33 m
<b>D</b> Wheelbase	2.78 m
<b>E</b> Ground clearance	37 cm
<b>F</b> Track width	1.88 m
<b>G</b> Cab width	0.96 m
<b>I</b> Height to high boom pivot	1.6 m
<b>J</b> Approach angle	30 °
<b>K</b> Upper rotation of forks	18 °
<b>L</b> Lower rotation of forks	104 °
Turning radius (outside wheels)	3.7 m
Weight with forks	7030 kg
Tyres type	405 / 70 - 20

### ENGINES

Engine model	PERKINS - Tier III - Stage 3A	KOHLER - Tier IV Final - Stage 3B
Engine Capacity	4400 cm <sup>3</sup>	3400 cm <sup>3</sup>
Engine power output	70 kW / 94 hp @ 2300 rpm	55.4 kW / 75 hp @ 2200 rpm
Engine torque	392 Nm @ 1400 rpm	375 Nm @ 1400 rpm
Transmission type	Hydrostatic transmission	
Fuel tank	120 l	120 l
Engine oil	7 l	15 l



### STANDARD EQUIPMENT

- > Hydrostatic transmission
- > ROPS / FOPS cabin with heating and ventilation
- > Cut-off of dangerous movements when overloaded
- > Possibility to combine mast, telescopic boom, excavation and accessories movements
- > Safety valves on hydraulic jacks
- > Gear equipment pump
- > 4 wheel drive and steer
- > Backlighted e-tronic dashboard

### OPTIONS AND ACCESSORIES

- > Electrically hydraulic controls
- > Different types of tires
- > Working lights
- > Rear camera or sensor
- > Air conditioning
- > Metal windscreen protection
- > Cold, hot environment or biodegradable oil
- > Buckets
- > Grabs
- > Jibs
- > Winches

