



# ALMACRAWLER

ALMAC-ITALIA.COM




**ALMAC  
RANGE**

# OUR PRODUCTS RANGE

Crawler Scissor Lift  
Bi-Levelling Technology  
6, 8 and 10m Working Height

**BL**



Crawler Telescopic Boom  
Levelling Technology  
12 m Working Height

**JT**



Crawler Compact Scissor Lift  
Stabilized Technology  
8, 12 and 14m Working Height

**HE**



Crawler Compact Carrier  
Bi-Levelling Technology  
2,0 and 2,5 Tons Capacity

**ML**



# OUR PRODUCTS RANGE



**1090-BL ELC**

**1090 Bi-Energy**

**1090-BL EVO**

**1090-BL Light**

**870-BL Bi-Energy**

**870-BL EVO**

**870-BL**

**850-BL**



**1090**

**870**

**850**

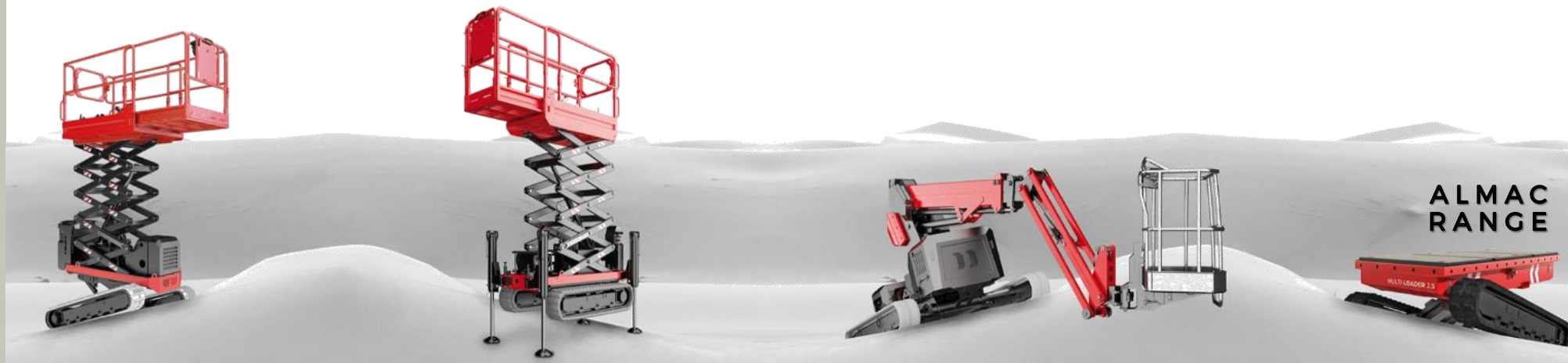


**ALMAC  
RANGE**

# OUR PRODUCTS RANGE



	Dynamic Levelling	Proactive Levelling	Direction Control	Thermic Engine	Electric Pump 220V	220V Power Generator	Battery Power Pack
850-BL	N.A.	N.A.	√	Honda or Hatz	Option	Option	N.A.
870-BL	N.A.	N.A.	√	Honda or Hatz	Option	Option	N.A.
870-BL EVO	√	N.A.	√	KUBOTA	Option	Option	N.A.
870-BL Bi-E	√	N.A.	√	Honda or Hatz	N.A.	Option	Lithium Pack 48V - 100Ah
1090-BL Light	N.A.	Option	√	Honda or Hatz	Option	Option	N.A.
1090-BL EVO	√	√	√	KUBOTA	Option	Option	N.A.
1090-BL Bi-E	√	√	√	Honda or Hatz	N.A.	Option	48V - 100Ah
1090-BL ELC	√	√	√	N.A.	Option	N.A.	AGM Battery 48V - 180Ah



**ALMAC  
RANGE**

# OUR PRODUCTS RANGE



	Series 850-BL	Series 870-BL	Series 1090-BL
Models	BIBI 850-BL	BIBI 870-BL BIBI 870-BL EVO BIBI 870-BL Bi-Energy	BIBI 1090-BL Light BIBI 1090-BL EVO BIBI 1090-BL Bi-Energy BIBI 1090-BL ELC
Working Height	7,9 m	7,9 m	10,0 m
Total Weight	1.990 kgs	2.460 kgs	2.830 kgs 3030 kgs (1090-BL ELC)
Basket Capacity	250 kgs	250 kgs	300 kgs
Basket Dimensions	0,8m x 1,5m (2,25m)	1,2m x 1,5m (2,35m)	1,3m x 1,8m (2,95m)
Max Speed	2,2 km/h	2,4 km/h	2,7 km/h
Width	1,3 m - 1,5 m	1,3 m - 1,5 m	1,46m - 1,64m



**ALMAC  
RANGE**



# OUR PRODUCTS RANGE



Series 850-BL



Series 870-BL



Series 1090-BL



	Series 850-BL	Series 870-BL	Series 1090-BL
Models	BIBI 850-BL	BIBI 870-BL BIBI 870-BL EVO BIBI 870-BL Bi-Energy	BIBI 1090-BL Light BIBI 1090-BL EVO BIBI 1090-BL Bi-Energy BIBI 1090-BL ELC
Moving Height (Max 1°)	6,1 m	6,1 m	7,0m
Levelling at Height (From 1° to 3°)	-	-	7,0m (1090-BL Light Option)
Gradeability	25°	25°	25°
Max. Side Slope	21°	21°	21°
Longitudinal Levelling	20° Front / 16° Rear	20° Front / 16° Rear	20° Front / 15° Rear
Lateral Levelling	15°	15°	14°



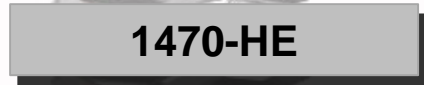
# OUR PRODUCTS RANGE



**1470-HE EVO**



**1270-HE**



**1470-HE**



**1270-HE Light**



**850-HE**

**1470**

**1270**

**850**



# OUR PRODUCTS RANGE



	Series 850	Series 1270-HE	Series 1470-HE	
Models	850-HE	1270-HE Light BIBI 1270-HE	1470-HE	1470-HE EVO
Width	0,79m - Narrow 1,15m - Wide	1,15m - Narrow 1,50m - Wide	1,15m - Narrow 1,50m - Wide	1,15m - Narrow 1,50m - Wide
Working Height Stab. Large	7,9 m	12,0 m 12,0 m	14,2m	14,2 m outdoor 14,2 m indoor
Working Height Stab. Narrow	-	9,0m	9,1 m	9,1 m outdoor 14,2 m indoor
Working Height On Crawlers	6,0 m	7,5m	7,5 m	7,5 m outdoor 13,7 m indoor
Moving Height (Max 2°)	4,0 m	6,5 m	6,5 m	6,5 m
Total Weight	1.730 kgs	2.880 kgs 3.180 kgs	3.380 kgs	3.480 kgs



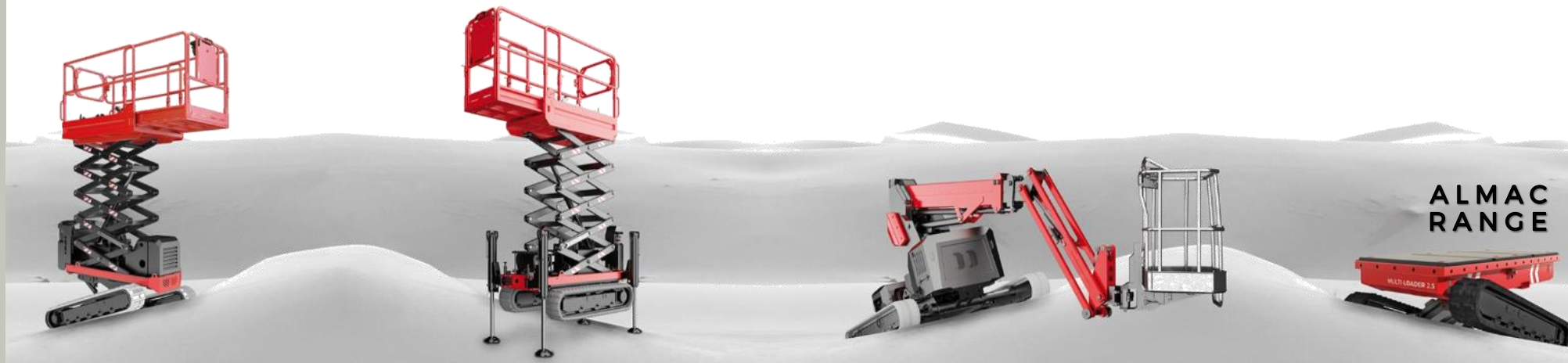
**ALMAC  
RANGE**



# OUR PRODUCTS RANGE



	Series 850	Series 1270-HE	Series 1470-HE	
Models	BIBI 850-HE	BIBI 1270-HE Light BIBI 1270-HE	BIBI 1470-HE	BIBI 1470-HE EVO
Gradeability	25°	25°	25°	25°
Max. Side Slope	21°	21°	21°	21°
Longitudinal Levelling	13° / 14° (F/R)	11° / 12° (F/R)	11° / 12° (F/R)	11° / 12° (F/R)
Lateral Levelling	23° / 20° (N/W)	24° / 20° (N/W)	24° / 20° (N/W)	24° / 20° (N/W)
Max Speed	2,0 km/h	2,2 km/h	2,2 km/h	2,2 km/h
Basket Capacity	250 kgs	300 kgs	300 kgs	300 kgs
Basket Dimensions	0,8m x 1,5m (2,25m)	1,15m x 2,63m 1,15m x 2,63 (4,00m)	1,15m x 2,63 (4,00m)	1,15m x 2,63 (4,00m)

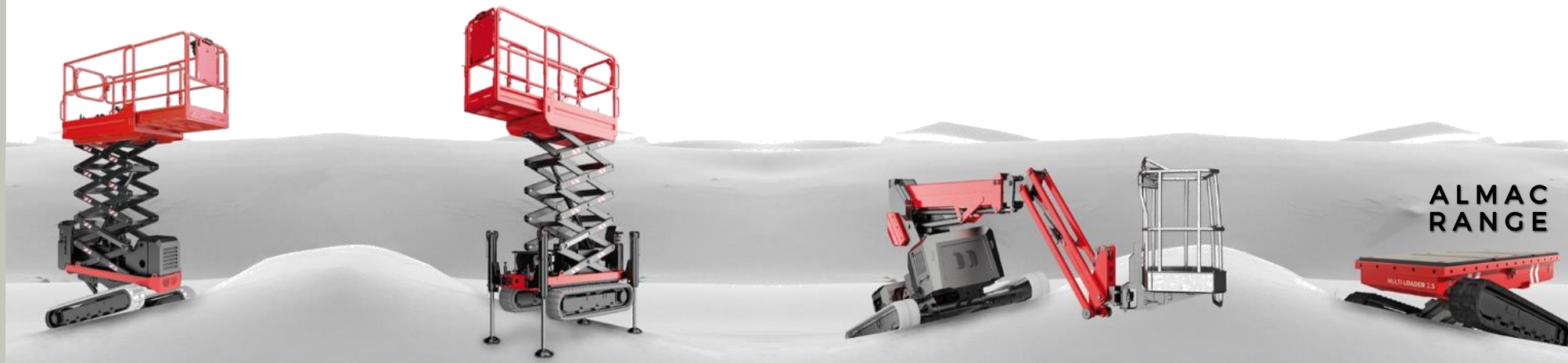


**ALMAC  
RANGE**

# OUR PRODUCTS RANGE



	Automat. Levelling	Easy Drive	Direction Control	Engine	Electric Pump 220V	220V Power Generator	Lithium Power Pack
850-HE	√	N.A.	√	Honda or Hatz	option	option	N.A.
1270-HE LIGHT	√	N.A.	√	Honda or Hatz	option	option	N.A.
1270-HE	√	N.A.	√	Honda or Hatz	option	option	N.A.
1470-HE	√	N.A.	√	Honda or Hatz	option	option	N.A.
1470-HE EVO	√	N.A.	√	KUBOTA	option	option	N.A.



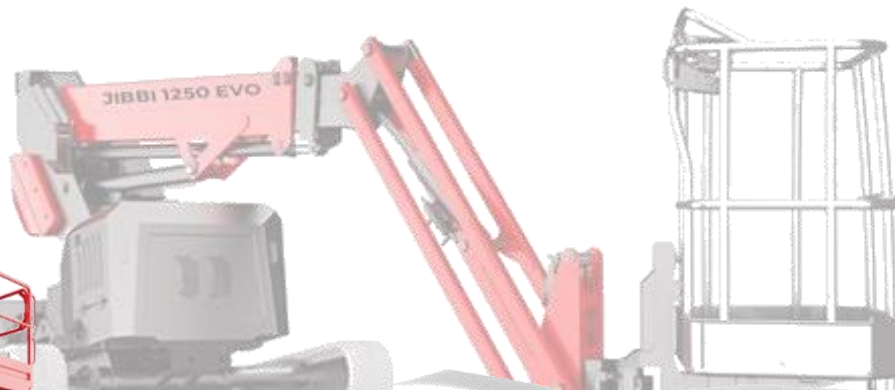
**ALMAC RANGE**

# OUR PRODUCTS RANGE



**JIBBI 1250 EVO**  
12m WH - 230 Kg Capacity – 2,8t

# 1250



**ALMAC  
RANGE**

# OUR PRODUCTS RANGE

## JIBBI 1250 EVO

- 12,2m Working Height
- 230 Kg Maximum Basket Capacity (2 persons)
- 80 Kg Minimum Basket Capacity (DWP System)
- 5,5m Maximum Outreach (Load = 230 Kg)
- 1,15m Minimum Width
- 1,50m Minimum Operating Width
- 1,95m Maximum Width
- 1,98m Minimum Height
- 3,70m Stowed Length (3,0m without Basket)
- +/- 15° Longitudinal Leveling
- +/- 15° Lateral Leveling
- 2,850 Kg Gross Weight



# OUR PRODUCTS RANGE



## JIBBI 1250 EVO

- Yanmar Diesel Engine, 3 Cylinders (14,1 KW - 19,2 HP)
- 25 Liters Diesel tank
- 240° Slewing ring rotation
- Basket Rotation Kit +/- 70°
- Cable Remote Console (integrated Colours Display 4,3")
- Integrated Drive System (using single Joystick)
- Automatic & Dynamic Leveling
- Pro-Active Leveling

### Patent Pending Innovations:

- **New Dynamic Work Performance (DWP by Almac)**
- **Undercarriage integrated by new Safe-lock System**

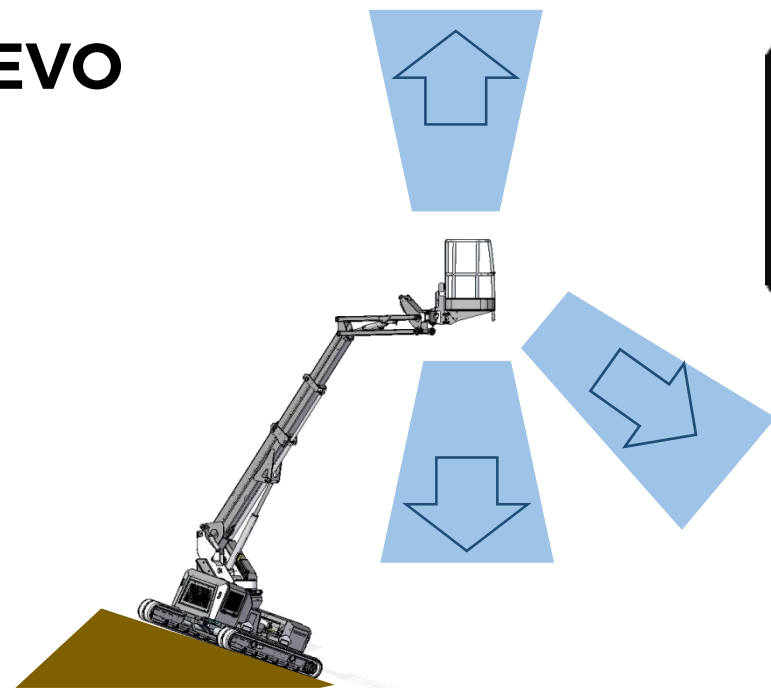


ALMAC  
RANGE



# OUR PRODUCTS RANGE

## JIBBI 1250 EVO

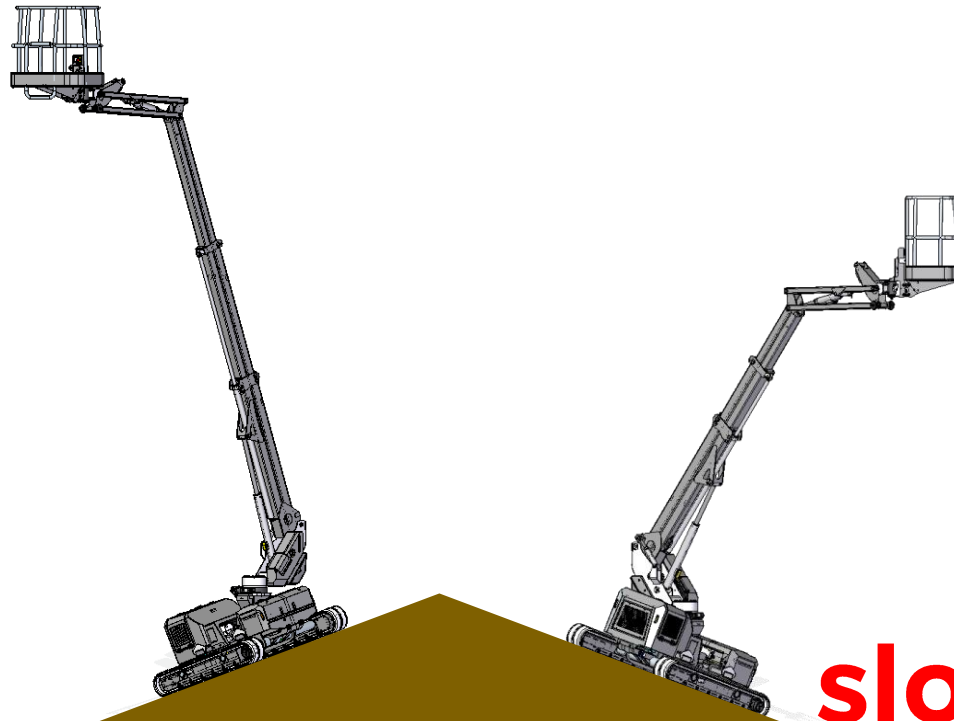


**New Ultrasonic Anti-collision System**



**ALMAC  
RANGE**

# OUR PRODUCTS RANGE



**slope 22° - 40%**



**ALMAC  
RANGE**

# OUR PRODUCTS RANGE

## MULTI LOADER 2.0

2.0t	5h
CAPACITY	RECHARGE
5h	20°
AUTONOMY	LONG. LEVEL
1.9 km/h	14°
SPEED	LATER. LEVEL

## MULTI LOADER 2.5

2.5t	5h
CAPACITY	RECHARGE
10h	20°
AUTONOMY	LONG. LEVEL
2.2 km/h	15°
SPEED	LATER. LEVEL



### Multi-LOADER 2.0

2.000 Kg Capacity – 1,7t

### Multi-LOADER 2.5

2.500 Kg Capacity – 1,8t

2.0

2.5



# OUR PRODUCTS RANGE

## Dati tecnici

## 2.0

## 2.5

## Technical data

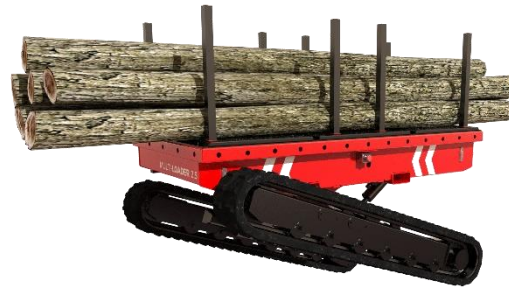
Portata	2.000 kg	2.500 kg	Max Capacity
Altezza minima	0,76 m	0.74 m	Max working height
Larghezza minima	1,30 m	1.46 m	Min Width
Larghezza massima	1,50 m	1.64 m	Max Width
Dynamic levelling	Si / Yes		Dynamic Levelling
Autonomia	5 h	10 h	Battery autonomy
Motorizzazione (elettropompa)	24V-3kW	48V-3kW	Powered (electric engine)
Pacco batterie	n°4 210Ah 24V	n°8 180Ah 48V	Battery pack
Caricabatterie	n°1 40Ah 24V	n°2 20Ah 48V	Battery charger
Tempo di ricarica	5 h		Recharging time
Comandi	Radiocomando / Remote		Consolle
Livellamento longitudinale Anteriore	20°		Longitudinal levelling Front
Livellamento longitudinale Posteriore	16°	15°	Longitudinal levelling Rear
Livellamento laterale	+/- 15°	+/- 14°	Lateral levelling
Elettropompa (opzionale)	220V-2kW or 110V-1,9kW		Electric pump (option)
Comandi idraulici	Proporzionali / Proportionals		Hydraulic commands
Kit per doppia velocità	max 1.90 km/h	max 2.20 km/h	Kit for high speed
Controllo dell'inclinazione	Autom.		Control of inclination
Pendenza superabile	25°		Gradeability
Massima pendenza laterale	25°		Side slope
Lunghezza	2.19 m	2.40 m	Length
Massa complessiva	1700 kg	1800 kg	Total weight



**ALMAC  
RANGE**



# OUR PRODUCTS RANGE



ALMAC  
RANGE